

This procedure for “*Kia Ceed, Sportage replacement button pad instructions*” prepared by Polmex – Western Australian manufacturer of Silicone Button Replacements for remote key controls of various car makes and models: Land Rover, Range Rover, Toyota, Mitsubishi, Kia, Holden, Commodore, Ford, Hyundai, BMW, Nissan, Hyundai and more

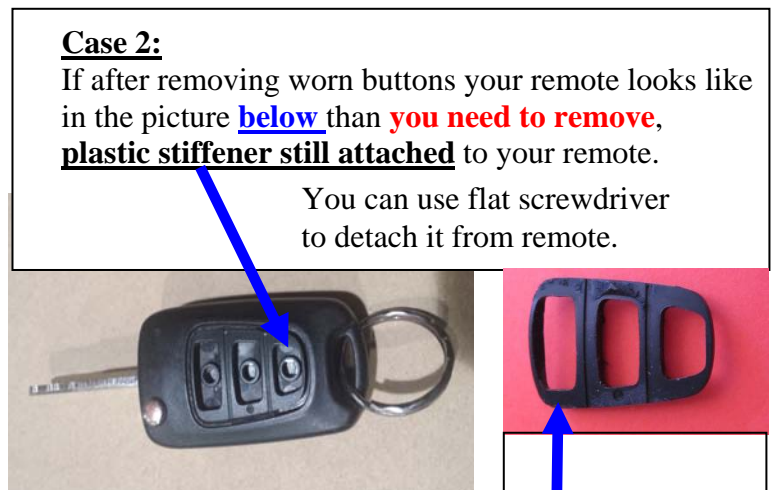
For Orders please visit us on line at [www.polmex.com.au](http://www.polmex.com.au)

**You are replacing worn buttons cover in Kia Ceed, Sportage flip key with Silicone Repair Pad from POLMEX.**

Our pads are made form high purity LSR Silicone and will not: deform, change shape, become brittle and break unlike original cover. It is a great fix at a fraction of the price of new remote and re-programming.



**DO NOT open remote.**  
Gently remove an old rubber pad from your remote.  
**Case 1:**  
If after removing worn buttons your remote looks like in the picture on [the left](#) than you can proceed with installing your new pad.



**Case 2:**  
If after removing worn buttons your remote looks like in the picture [below](#) than **you need to remove, plastic stiffener still attached** to your remote.

You can use flat screwdriver to detach it from remote.

**Plastic stiffener REMOVED from remote.**  
**It will not be re-used.**



Your remote needs to look like the one [on the left](#), before you start installing new keypad. Please also check if grooves are free of any old rubber pieces.

You may use small flat screwdriver or toothpick to remove any remnants from grooves.

**DO NOT USE** any sharp objects.



Place a new silicone pad over top part of your remote. Use rolling motion when positioning pad in grooves and press firmly till pad “engages“ with hard shell all around edges and in the middle. If pad is not sitting in level with the shell you can use finger nail to push it deeper in the groove.  
**DO NOT USE** any lubricants or detergents for cleaning grooves as it will affect firm seating of a pad.

**No re-programming is required.**

